

**GCCC**  
**360 Centre**  
**of Oncological**  
**Excellence**







## Creating the 360 centre for cancer treatment

The latest advances in cancer treatment require an increasingly personalised response to the disease. The **partnership between GenesisCare**, international leader in cancer treatments, and **Clínica Corachan**, a medical reference in private healthcare in Catalonia, offers the most complete project for the patient's journey, from prevention to aftercare treatment.

# GenesisCare and Clínica Corachan GCCC

The partnership between these two leaders leads to a different way of approaching cancer.

**The international experience of GenesisCare, with more than 70 centres worldwide, adds to the experience of more than 98 years of Clínica Corachan in private healthcare in Catalonia.**

A project with new facilities, designed following the ***Friendly Materials®*** and ***Clear Code®*** methodologies of universal access and offering spaces designed to increase the well-being of cancer patients.

**A 360 centre** that brings together the scientific and clinical skills of an international medical group, equipped with avant-garde technological equipment.

---

More than

70

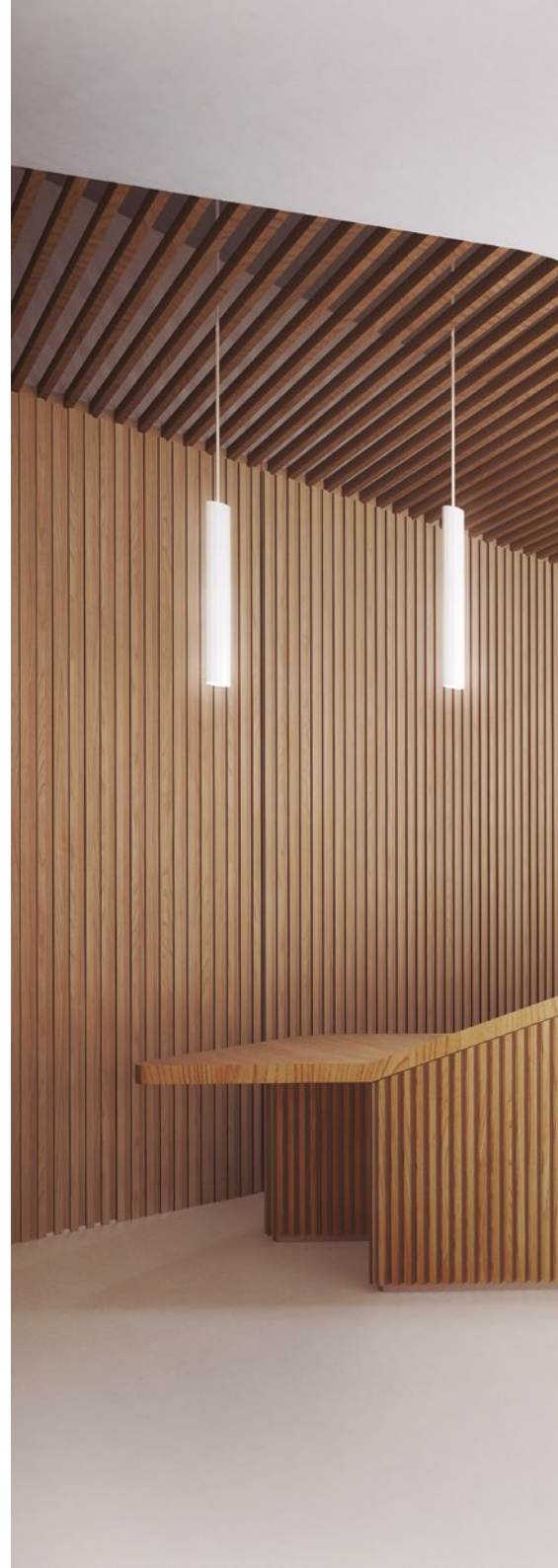
specialised  
cancer centres

98

years of history  
of Clínica  
Corachan

1,400

m<sup>2</sup>  
oncological  
area







GCCC





# 360

## An integral and multidisciplinary vision

Medical teams are composed of professionals from **different specialties**. A tumour committee analyses each case, coordinated by the centre's healthcare director. The team's vision shapes treatment strategy, which is subject to continuous monitoring and control once underway.

### **The patient and their family are never alone.**

From the reception to the skilled nursing, multidisciplinary clinicians, psycho-oncologists, technicians... the whole care process is quick and easy and patient-focused.

# 360 Focussed on the patient

GCCC offers **comprehensive patient support** every step of the way during all phases of cancer. A space that brings together the **most innovative techniques, from immunotherapy to psychological support during and after treatment.**

---

## **Genetic Counselling**

Assessment and prevention of hereditary cancer.

## **Psycho-oncological care**

For the patient and their family.

## **Patient school**

And psycho-educational workshops.

## **Care and management**

For patients travelling nationally and internationally.

## **Consultations 2<sup>nd</sup> opinion**

With experts of world-renowned prestige.







# All in a single campus

## Preventive consultations

Molecular diagnosis  
Early screening and diagnosis  
Genetic advice

---

## Diagnosis

Image  
CT  
RM 3 Teslas  
Mammography  
Ultrasound scan  
Conventional radiology  
Pathological anatomy  
  
Laboratory  
Extractions  
Processing  
Genetics

## Oncology consultations

Medical Oncology  
Radiation Oncology  
Geriatric Oncology

---

## Treatments

**Medical oncology**  
Chemotherapy  
Targeted therapies  
Immunotherapy  
Hormone therapy  
Outpatient hospital with private rooms

### Radiation Oncology

MR and CT planning  
3D radiotherapy  
IMRT  
VMAT  
IGRT  
SRS  
SBRT  
SGRT  
High Rate Brachytherapy

**Support and Palliative care unit**

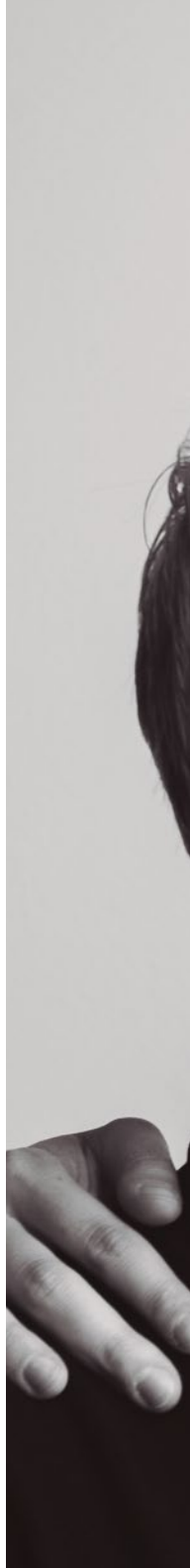
## Further services

Psycho-oncology  
Dietetics and nutrition  
Fertility preservation  
Dermatology  
Sexual dysfunction  
Physiotherapy and rehabilitation  
Cosmetics/aesthetics  
Patient workshops  
Other therapies

---

## Scientific activity

Tumour committee  
Healthcare protocols  
Clinical trials







**Dr. Joaquim Bellmunt**, healthcare director and world-renowned specialist in cancer research.



## 360 From Harvard to Barcelona

**Dr. Joaquim Bellmunt** is one of the great figures in cancer treatment. He is a renowned expert in genitourinary tumours, with extensive experience in all types of tumours, and an international leader in immunotherapy. Former director of the Bladder Cancer Centre at the Dana Farber Cancer Institute (DFCI) in Boston and, currently, associate professor at Harvard. **Dr. Bellmunt leads GCCC, the 360 Centre of Oncological Excellence,** with the help of a team of experts in different cancer pathologies and GenesisCare's international network of oncologists.

---

**Pioneer in  
immunotherapy**

**Associate  
Professor at  
Harvard**

**Director of the new Centre of  
Oncological Excellence**

360

## Experts in all areas of medical and radiation oncology

### Medical oncology

---

**Dr. Pablo Maroto**

Specialist in urological, germ cell, head and neck and digestive tumours.

**Dra. Amaia Ramírez**

Specialist in breast and gynaecological tumours, colon neoplasia, risk assessment and prevention of hereditary cancer.

**Dra. Georgia Anguera**

Specialist in thoracic tumours, lung neoplasia, genitourinary and skin tumours and melanoma.

**Dr. Miguel Hernández-Bronchud**

Specialist in breast cancer, gynaecological, digestive and pancreas tumours, malignant melanomas and brain tumours (sarcomas).

### Radiation oncology

---

**Dr. Jordi Craven-Bartle**

Specialist in head and neck, CNS tumour, gynaecological and mesenchymal tumours (sarcomas).

**Dra. Gemma Sancho**

Specialist in urological tumours.

**Dr. Antonio Seral**

Specialist in breast, gynaecological, lung and digestive tumours.


**Dr. Jaume Fernández Ibiza**

Specialist in breast, gynecological and prostate tumours.

**Dr. Ernest Luguera Sánchez**

Specialist in hospital radio-physics.



A photograph of two people, likely a man and a woman, seen from the back of their heads and shoulders. They are looking out over a vast, flat landscape under a bright blue sky with scattered white clouds. The person on the left is wearing glasses and a dark jacket. The person on the right is wearing a striped shirt. A large, semi-transparent white circle is overlaid on the center of the image, containing text.

Medical  
Oncology

360

Radiation  
Oncology

360

## Cutting-edge technology for high precision treatments

The GCCC Oncology Centre of Excellence brings together the **most advanced technology in radiotherapy**. It is equipped with the new **Elekta Versa HD accelerator with HDRS** to perform high precision treatments in less sessions and with minimum risk of damaging the surrounding healthy tissues.

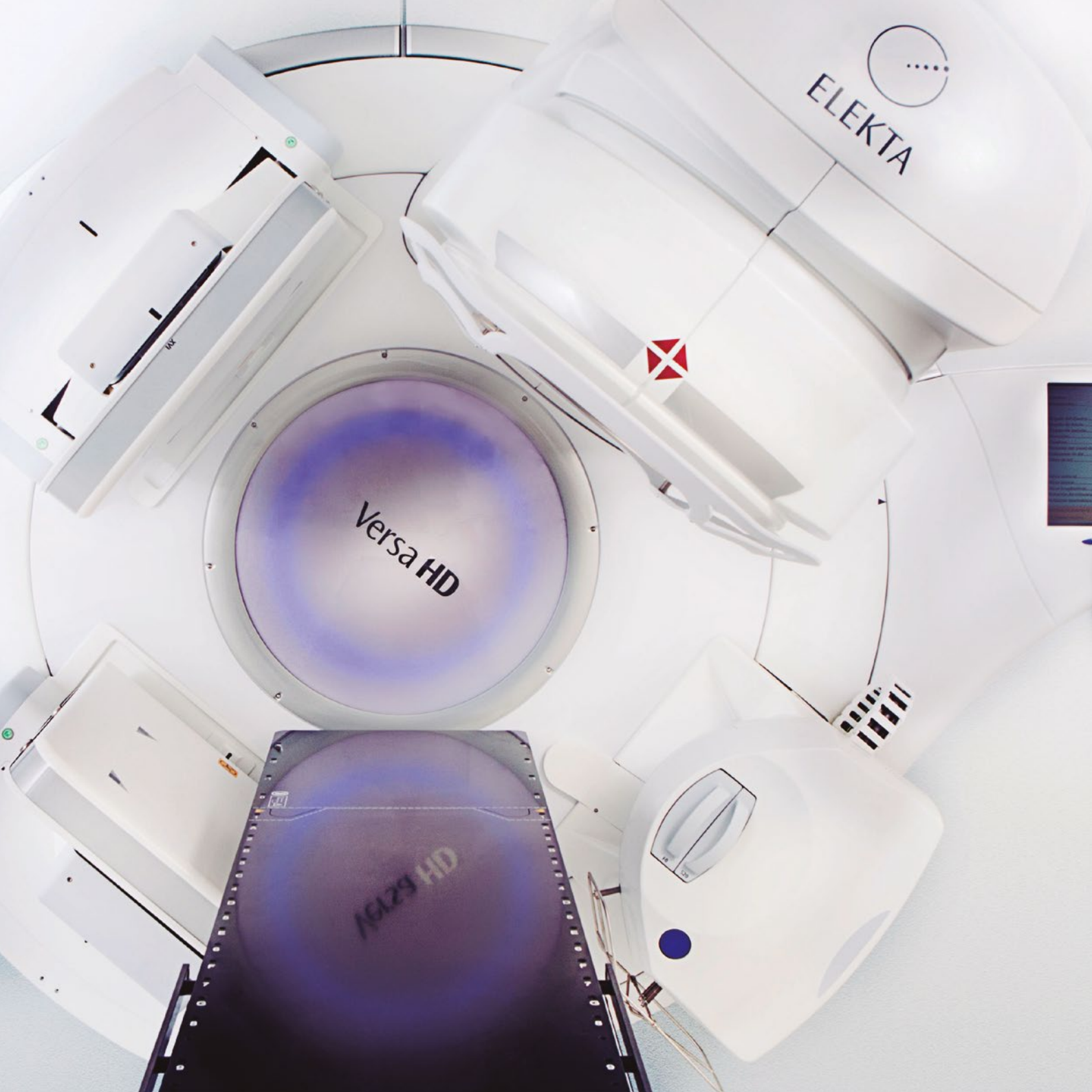
One of the unique advantages is the possibility of planning radiotherapy treatments, which can be carried out using magnetic **resonance imaging which is pioneered in Spain**.

### The technology and equipment of the centre provides a great variety of treatments:


- 3-D conformal radiation (RT3D)
- Intensity Modulated Radiotherapy (IMRT)
- Image-Guided Radiotherapy (IGRT)
- Surface Guided Radiotherapy (SGRT)
- Volumetric Modulated Arc Therapy (VMAT)
- Intracranial Radiosurgery (SRS)
- Stereotactic Body Radiotherapy (SBRT)
- High Dose Rate Brachytherapy (HDR)











# 360 Research and clinical expertise

Thanks to the research carried out by **Dr. Bellmunt and his team**, **new targeted medications have been developed, showing a greater efficacy in some types of cancer.** His research in immunotherapy led to the first-time approval in the United States and Europe of an **innovative and revolutionary immunotherapeutic treatment for genitourinary tumours.**



360

## Support for the patient and their family

Having cancer is not just a personal process, it also affects the whole family. We offer support mechanisms to help the patient and the whole family every step of the way.



360

## Comprehensive range of further services

Psycho-oncology, dietetics and nutrition, dermatology, physiology and rehabilitation, cosmetics/aesthetics, fertility preservation, sexual dysfunction, patient workshops and other therapies.





360

## Transparency and respect for the patient

We want to take care of the person, share our knowledge with them, and where the patient will be fully informed and of their medical information throughout the process.



360

## The patient is an active part of their treatment

Cancer treatment alternatives increase day by day and they all involve active patient engagement.



A world map is centered on the image, with a rainbow visible over South America. The map is semi-transparent, showing a cityscape at the bottom. Three callout boxes are overlaid on the map, each pointing to a specific country and containing a number and text.

**15**

Cancer centres  
in the  
**United Kingdom**

**21**

Cancer  
centres in  
**Spain**

**32**

Cancer  
centres in  
**Australia**



4

Cancer  
centres in  
China (\*)

## 360 GenesisCare, more than 70 centres worldwide

**GenesisCare** is a global leader in cancer treatments, with **more than 70 centres worldwide**: 32 in Australia, 4 in China (\*), 15 in the United Kingdom and 21 in Spain, where they have an experience of more than 30 years.

A network that facilitates the sharing of treatment information to get a better understanding of cancer.

(\*) In development



# 360

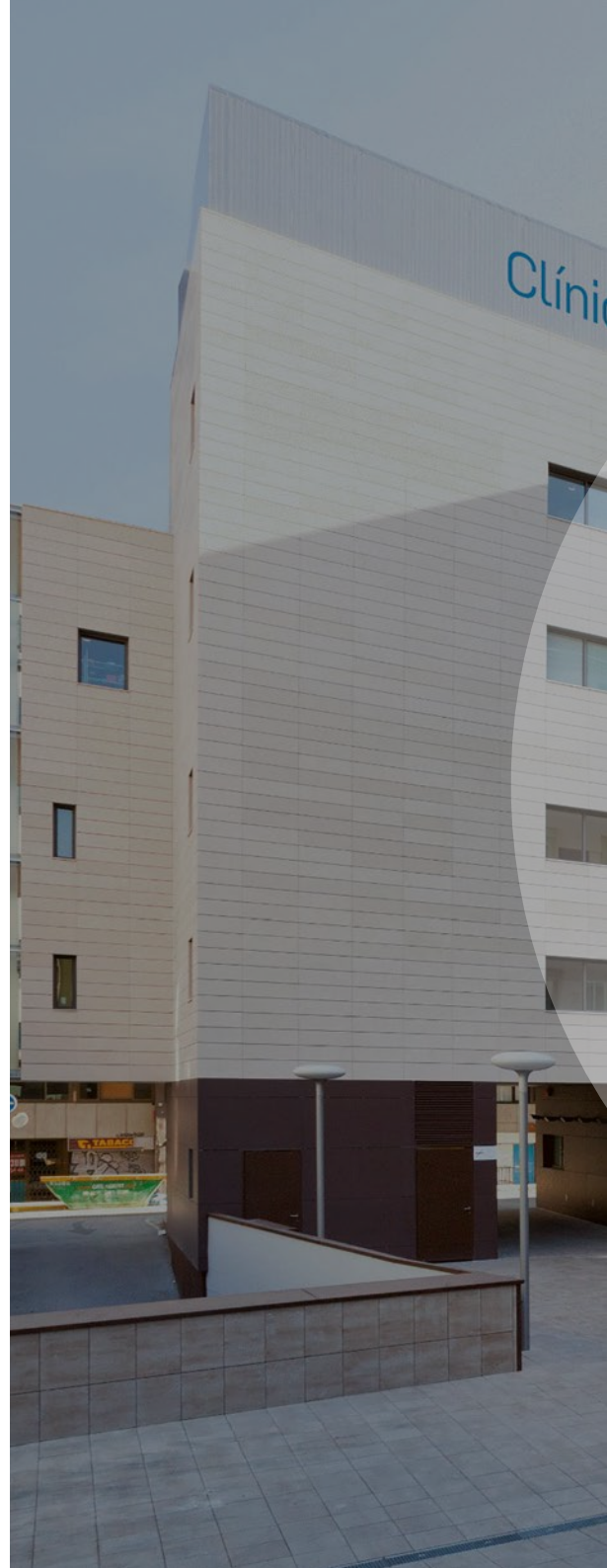
## Clínica Corachan, a quality health complex

**Clínica Corachan** is one of the **most prestigious private clinics in Barcelona**. Founded by Dr. Manuel Corachan in 1921, it combines tradition and modernity, guaranteeing excellent care and personalised services. The centre, equipped with a state-of-the-art surgical block, an integral emergency service, 150 private rooms and a high-end diagnostic imaging department, offers **all medical and surgical specialties in a complete and modern 42,000 m<sup>2</sup> campus**.

Within the framework of its commitment to quality, avant-garde and excellence, it is currently one of the best valued private centres in the country.

---

1,200	healthcare professionals
42,000	m <sup>2</sup> campus
120,000	patients treated per year





ca Corachan

360

of innovative  
experience









## 360 **Agreement with leading insurance companies\***

At GCCC we work to provide access to high-quality treatments to both private patients and patients from leading insurance companies.  
For additional information:

Request an appointment:  
**+34 93 205 05 48**

Visit:  
**[corachan.genesiscare.com](https://corachan.genesiscare.com)**

**Medical oncology:**  
**[om.barcelona@genesiscare.es](mailto:om.barcelona@genesiscare.es)**

**Radiation oncology:**  
**[ort.barcelona@genesiscare.es](mailto:ort.barcelona@genesiscare.es)**

\* GCCC will manage individually every authorization request for each treatment based on the coverage of the contracted policy, as well as the insurer services portfolio.



**GCCC**  
**360 Centre**  
**of Oncological**  
**Excellence**

Plaça Manuel Corachan, 1  
08017 Barcelona